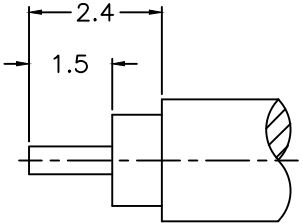
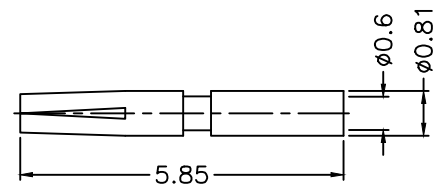
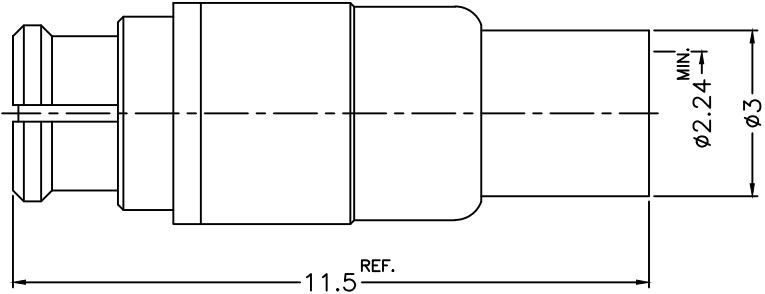


1 2 3 4 5 6 7 8

REVISIONS		
ISS	ZONE	DESCRIPTION\PER REQUEST\DATE



RECOMMENDED  
CABLE STRIPPING DIM'S  
(建議剝線尺寸)



NOTES: FINISH (PLATING THICKNESS IN MICRO-INCHES)  
 1. BRASS  
 2. THIN GOLD OVER NICKEL PL. 50 MIN. THICK OVER COPPER PL. 50 MIN. THICK  
 3. BERYLLIUM COPPER  
 4. GOLD PL. 3 MIN. THICK OVER NICKEL PL. 50 MIN. THICK OVER COPPER PL. 50 MIN. THICK  
 5. TEFLON

RoHS COMPLIANT

5	CONTACT PIN	NOTE 3	NOTE 4	1	SMP-6111A1-5 -0.6	DIMENSIONS ARE IN MILLIMETERS UNLESS OTHERWISE SPECIFIED TOLERANCES 0.5-6 = ±0.2 6-30 = ±0.4 30-120 = ±0.6 120-315 = ±1 315-1000 = ±1.6 1000-2000 = ±2.4	PART NO.		<h1>G.L.I.</h1>	
4	RETAINER RING	NOTE 1	NOTE 2	1	SMP-6182A1-4		APPROVED	DATE 12-08-'14		TITLE SMP DIRECT SOLDER JACK (FOR .085, .086 SEMI-RIGID CABLE)
3	BARREL	NOTE 1	NOTE 2	1	SMP-6181A1-3 -28		CHECKED	DATE 12-08-'14		DRAWING NO. SMP-6181A1-28-50
2	INSULATOR	NOTE 5	NATURAL	1	SMP-6111A1-2 -50T		DRAWN	DATE 12-08-'14		FILE NO. R:\D\G\DWG\SMP\6181A1\28\50
1	BODY	NOTE 3	NOTE 2	1	SMP-6111A1-1		ANGELA			
NO.	DESCRIPTION	MATERIAL	FINISH	Q'TY	DRAWING NO.	SCALE	8/1	ISSUE	A	

1 2 3 4 5 6 7 8

F  
E  
D  
C  
B  
A

F  
E  
D  
C  
B  
A