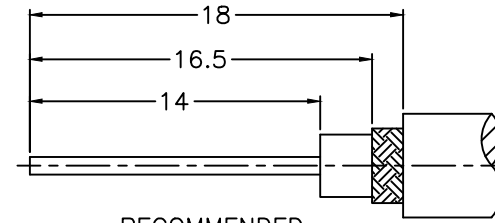
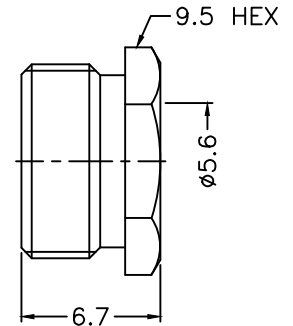
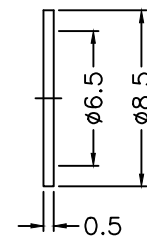
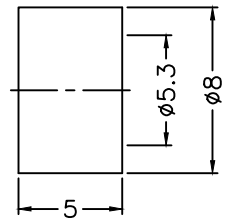
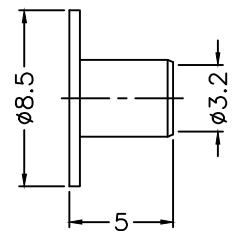
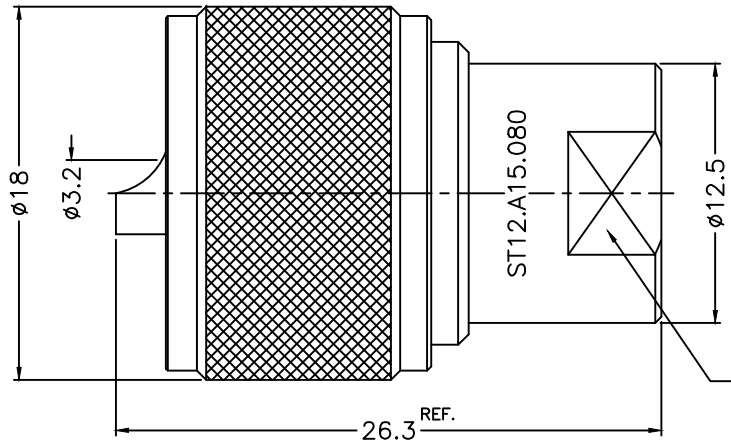


1 2 3 4 5 6 7 8

REVISIONS		
ISS	ZONE	DESCRIPTION\PER REQUEST\DATE



RECOMMENDED
CABLE STRIPPING DIM'S
(建議剝線尺寸)



NOTES: FINISH (PLATING THICKNESS IN MICRO-INCHES)
 1. BRASS
 2. ALBALOY PLATING (COPPER-TIN-ZINC) PL. 80 MIN. THICK
 3. SILVER PL. 200 MIN. THICK OVER COPPER PL. 50 MIN. THICK
 4. TEFLON

9	NUT	NOTE 1	NOTE 2	1	HN-95-3832-67
8	WASHER	NOTE 1	NOTE 3	1	WS-65-85-05
7	GASKET	SILICONE	RED	1	GS-53-80-50
6	TOP HAT	NOTE 1	NOTE 3	1	TH-32-85-50
5	RETAINER RING	SUS 304	NATURAL	1	600-5072A1-6
4	CONTACT PIN	NOTE 1	NOTE 3	1	600-1141A2-4 -3.2
3	INSULATOR	NOTE 4	NATURAL	1	600-1141A2-3 -50T
2	BODY	NOTE 1	NOTE 2	1	600-1141A2-2
1	SHELL	NOTE 1	NOTE 2	1	600-5072A1-7
NO.	DESCRIPTION	MATERIAL	FINISH	Q'TY	DRAWING NO.

DIMENSIONS ARE IN MILLIMETERS
 UNLESS OTHERWISE SPECIFIED
 TOLERANCES
 0.5-6 = ±0.2
 6-30 = ±0.4
 30-120 = ±0.6
 120-315 = ±1
 315-1000 = ±1.6
 1000-2000 = ±2.4

PART NO.	
APPROVED	DATE 10-02-'12
CHECKED	DATE 10-02-'12
DRAWN	DATE 10-02-'12

G.L.I.	
TITLE	UHF CLAMP PLUG (FOR RG-58C/U, LMR-195)
DRAWING NO.	600-1141A2-06C-50
FILE NO.	R:\D\G\DWG\600\1141A2\06C\50

1 2 3 4 5 6 7 8

F
E
D
C
B
A

F
E
D
C
B
A