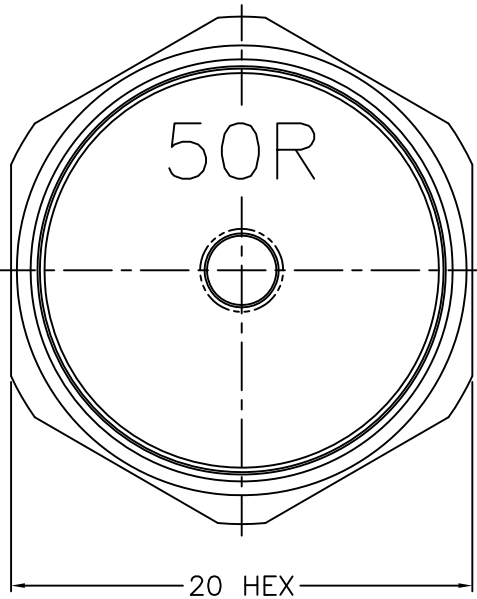
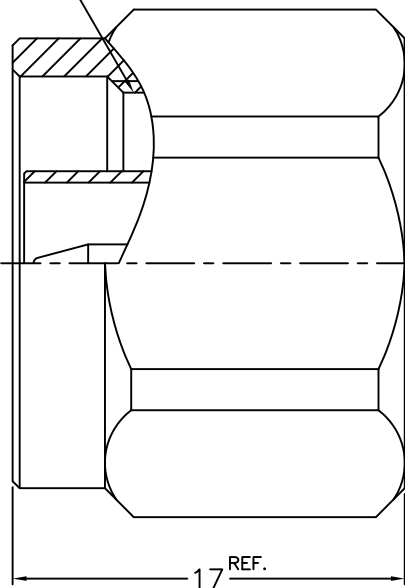


1			2			3			4			5			6			7			8		
REVISIONS																							
ISS	ZONE	DESCRIPTION\PER REQUEST\DATE																					

FREQUENCY RANGE	VSWR(RETURN LOSS)
DC-18GHz	1.25 MAX.

5/8-24UNEF-2B



NOTES: FINISH (PLATING THICKNESS IN MICRO-INCHES)

1. BRASS
2. NICKEL PL. 100 MIN. THICK OVER COPPER PL. 50 MIN. THICK
3. GOLD PL. 3 MIN. THICK OVER NICKEL PL. 50 MIN. THICK OVER COPPER PL. 50 MIN. THICK
4. PTFE
5. PASSIVATED
6. SILICONE RUBBER

RoHS COMPLIANT

8	SHELL	NOTE 1	NOTE 2			DIMENSIONS ARE IN MILLIMETERS				PART NO.				G.L.I.			
7	RETAINER RING	SUS 304	NOTE 5			UNLESS OTHERWISE SPECIFIED TOLERANCES 0.5-6 = ±0.2 6-30 = ±0.4 30-120 = ±0.6 120-315 = ±1 315-1000 = ±1.6 1000-2000 = ±2.4				APPROVED		DATE					
6	GASKET	NOTE 6	RED									07-08-'21		N TERMINATOR PLUG (50 ohms)			
5	INSULATOR	NOTE 4	NATURAL									DATE		DRAWING NO.			
4	BODY	NOTE 1	NOTE 2									07-08-'21		5824-1004H2-50			
3	COVER	NOTE 1	NOTE 2									DATE		FILE NO.			
2	RESISTOR	50R	NATURAL									07-08-'21		R:\D\DWG\5824\1004H2\50			
1	CONTACT PIN	NOTE 1	NOTE 3			SCALE 3/1 ISSUE 1				DRAWN BRIAN		DATE 07-08-'21					
NO.	DESCRIPTION	MATERIAL	FINISH	Q'TY	DRAWING NO.	SCALE	3/1	ISSUE	1								

1			2			3			4			5			6			7			8		
---	--	--	---	--	--	---	--	--	---	--	--	---	--	--	---	--	--	---	--	--	---	--	--