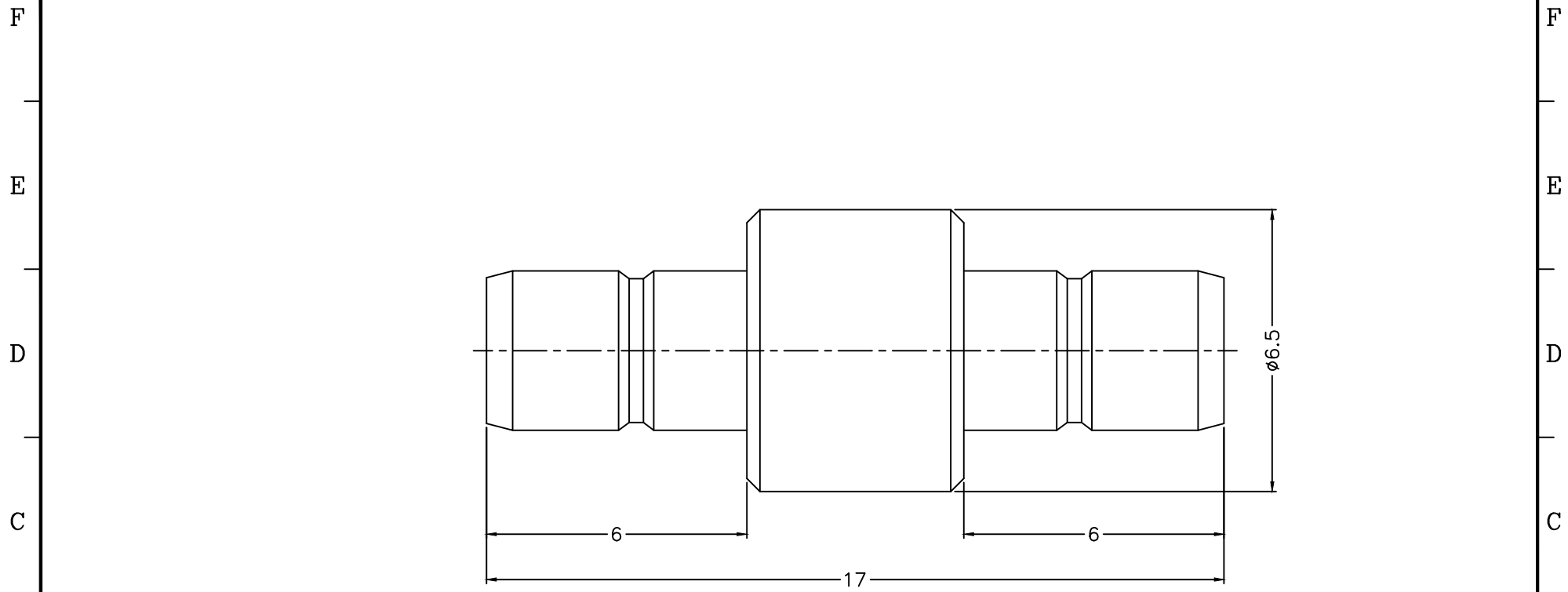


1 2 3 4 5 6 7 8

REVISIONS		
ISS	ZONE	DESCRIPTION\PER REQUEST\DATE



NOTES: FINISH (PLATING THICKNESS IN MICRO-INCHES)
 1. BRASS
 2. THIN GOLD OVER NICKEL PL. 50 MIN. THICK OVER COPPER PL. 50 MIN. THICK
 3. GOLD PL. 3 MIN. THICK OVER NICKEL PL. 50 MIN. THICK OVER COPPER PL. 50 MIN. THICK
 4. TEFLON

RoHS COMPLIANT

					DIMENSIONS ARE IN MILLIMETERS				PART NO.		G.L.I.		
					UNLESS OTHERWISE SPECIFIED TOLERANCES				APPROVED	DATE			
					0.5-6 = ±0.2					04-19-'16	SMB JACK TO JACK ADAPTOR		
					6-30 = ±0.4				CHECKED	DATE	DRAWING NO.		
					30-120 = ±0.6					04-19-'16	500-2071A1-50		
					120-315 = ±1				DRAWN	DATE	FILE NO.		
					315-1000 = ±1.6					04-19-'16	R:\D\G\DWG\500\2071A1\50		
					1000-2000 = ±2.4								
3	CONTACT PIN	NOTE 1	NOTE 3	1	500-2071A1-3	SCALE	8/1	ISSUE	A				
2	INSULATOR	NOTE 4	NATURAL	2	500-2071A1-2 -50T								
1	BODY	NOTE 1	NOTE 2	1	500-2071A1-1								
NO.	DESCRIPTION	MATERIAL	FINISH	Q'TY	DRAWING NO.								

1 2 3 4 5 6 7 8