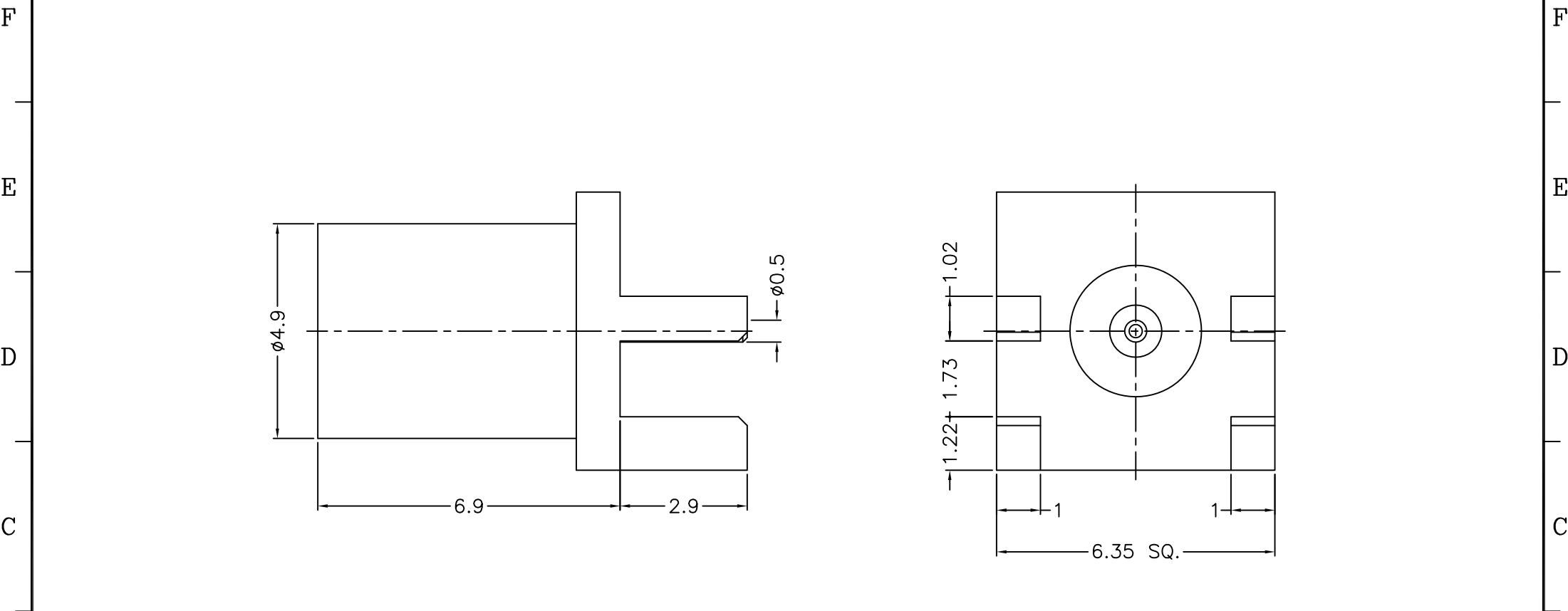


1			2			3			4			5			6			7			8		
REVISIONS																							
ISS		ZONE		DESCRIPTION\PER REQUEST\DATE																			



NOTES: FINISH (PLATING THICKNESS IN MICRO-INCHES)

1. BRASS
2. NICKEL PL. 100 MIN. THICK OVER COPPER PL. 50 MIN. THICK
3. BERYLLIUM COPPER
4. GOLD PL. 3 MIN. THICK OVER NICKEL PL. 50 MIN. THICK OVER COPPER PL. 50 MIN. THICK
5. TEFLON

RoHS COMPLIANT

						DIMENSIONS ARE IN MILLIMETERS				PART NO.						<b>G.L.I.</b>									
						UNLESS OTHERWISE SPECIFIED TOLERANCES				APPROVED												TITLE			
						0.5-6 = ±0.2				DATE						06-15-'16									
						6-30 = ±0.4				CHECKED						DATE									
						30-120 = ±0.6				DRAWN						DATE									
						120-315 = ±1				ANGELA						06-15-'16									
						315-1000 = ±1.6										DRAWING NO.									
						1000-2000 = ±2.4										400-6251S6-50									
3		CONTACT PIN		NOTE 3		NOTE 4		1		400-6251S6-3						FILE NO.									
2		INSULATOR		NOTE 5		NATURAL		1		400-6251S6-2-50T						R:\D\G\DWG\400\6251S6\50									
1		BODY		NOTE 1		NOTE 2		1		400-6251S6-1															
NO.		DESCRIPTION		MATERIAL		FINISH		Q'TY		DRAWING NO.		SCALE		8/1		ISSUE		2							

3		CONTACT PIN		NOTE 3		NOTE 4		1		400-6251S6-3						FILE NO.									
2		INSULATOR		NOTE 5		NATURAL		1		400-6251S6-2-50T						R:\D\G\DWG\400\6251S6\50									
1		BODY		NOTE 1		NOTE 2		1		400-6251S6-1															
NO.		DESCRIPTION		MATERIAL		FINISH		Q'TY		DRAWING NO.		SCALE		8/1		ISSUE		2							