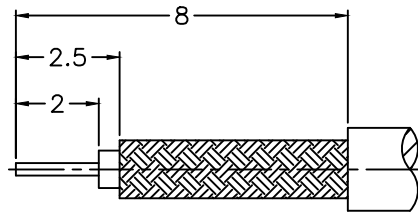
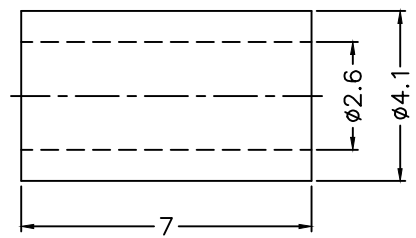
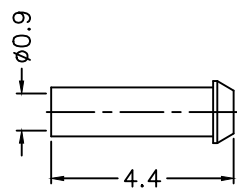
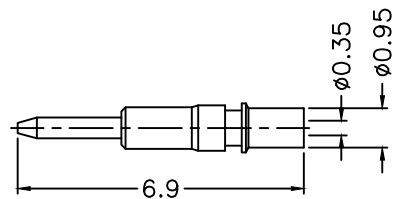
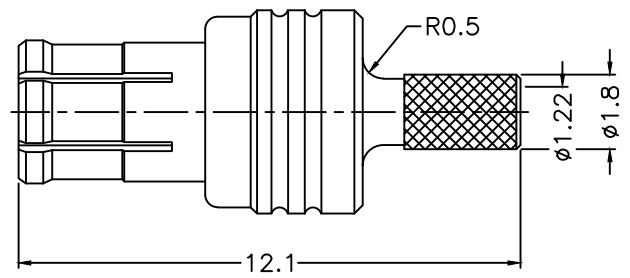


1 2 3 4 5 6 7 8

REVISIONS		
ISS	ZONE	DESCRIPTION\PER REQUEST\DATE



RECOMMENDED
CABLE STRIPPING DIM'S
(建議剝線尺寸)



- NOTES: FINISH (PLATING THICKNESS IN MICRO-INCHES)
1. BRASS
 2. THIN GOLD OVER NICKEL PL. 50 MIN. THICK OVER COPPER PL. 50 MIN. THICK
 3. BERYLLIUM COPPER
 4. GOLD PL. 3 MIN. THICK OVER NICKEL PL. 50 MIN. THICK OVER COPPER PL. 50 MIN. THICK
 5. TEFLON

RoHS COMPLIANT

NO.	DESCRIPTION	MATERIAL	FINISH	Q'TY	DRAWING NO.
6	FERRULE	COPPER	NOTE 2	1	FR-26-41-70C
5	SPACER		NOTE 1	NOTE 2	1 SP-09-12-44
4	CONTACT PIN		NOTE 1	NOTE 4	1 400-1121E1-4 -0.35
3	INSULATOR		NOTE 5	NATURAL	1 400-1121E1-3 -50T
2	BODY		NOTE 3	NOTE 2	1 400-1121E1-2
1	HOUSING		NOTE 1	NOTE 2	1 400-1121E1-1 -01

DIMENSIONS ARE IN MILLIMETERS
UNLESS OTHERWISE SPECIFIED
TOLERANCES
0.5-6 = ±0.2
6-30 = ±0.4
30-120 = ±0.6
120-315 = ±1
315-1000 = ±1.6
1000-2000 = ±2.4

PART NO.	
APPROVED	DATE 08-25-'16
CHECKED	DATE 08-25-'16
DRAWN	DATE 08-25-'16

G.L.I.	
TITLE MCX CRIMP PLUG (FOR RG-178, 196 CABLE)	
DRAWING NO. 400-1121E1-01-50	
FILE NO. R:\D\G\DWG\400\1121E1\01\50	

1 2 3 4 5 6 7 8

F
E
D
C
B
A

F
E
D
C
B
A