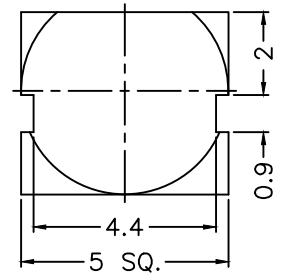


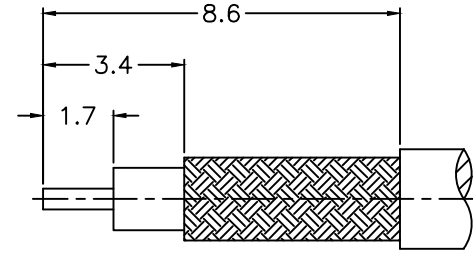
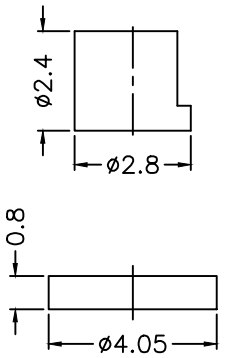
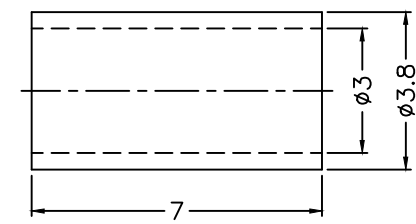
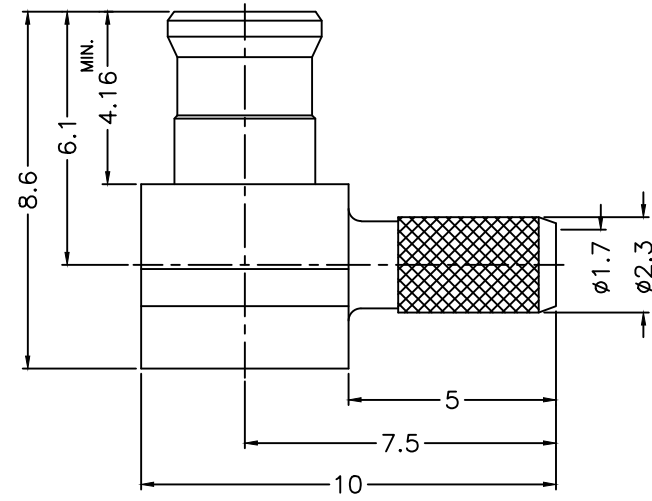
1 2 3 4 5 6 7 8

REVISIONS			
ISS	ZONE	DESCRIPTION\PER REQUEST\DATE	
B	A-2	NO.1 WAS CHANGED\RD-DM020502001\05-02-'13	
B1	C-6	1.7 WAS 2.7\N/A\05-16-'16	
C	A-2	NO.2 WAS CHANGED\RD-DM050713001\07-13-'16	



1. CRIMPED FERRULE
HEX CRIMP SIZE .128"
2. CONTACT PIN TO SOLDER

NOTES: FINISH (PLATING THICKNESS IN MICRO-INCHES)
 1. BRASS
 2. THIN GOLD OVER NICKEL PL. 50 MIN. THICK OVER COPPER PL. 50 MIN. THICK
 3. BERYLLIUM COPPER
 4. GOLD PL. 3 MIN. THICK OVER NICKEL PL. 50 MIN. THICK OVER COPPER PL. 50 MIN. THICK
 5. TEFLON
 6. DELRIN



RECOMMENDED
CABLE STRIPPING DIM'S
(建議剝線尺寸)

RoHS COMPLIANT

7	FERRULE	COPPER	NOTE 2	1	FR-30-38-70C	
6	COVER		NOTE 1	NOTE 2	1	CV-405-08
5	INSULATOR		NOTE 6	NATURAL	1	400-1112A1-5D
4	CONTACT PIN		NOTE 1	NOTE 4	1	400-1112A1-4
3	INSULATOR		NOTE 5	NATURAL	1	400-1112A1-3-50T
2	BODY		NOTE 3	NOTE 2	1	400-1112A1-2
1	HOUSING		NOTE 1	NOTE 2	1	400-1112A1-1A-02
NO.	DESCRIPTION	MATERIAL	FINISH	Q'TY	DRAWING NO.	

DIMENSIONS ARE IN MILLIMETERS
 UNLESS OTHERWISE SPECIFIED TOLERANCES
 0.5-6 = ±0.2
 6-30 = ±0.4
 30-120 = ±0.6
 120-315 = ±1
 315-1000 = ±1.6
 1000-2000 = ±2.4

PART NO.	
APPROVED	DATE 07-13-'16
CHECKED	DATE 07-13-'16
DRAWN	DATE 07-13-'16

G.L.I.	
TITLE	MCX R/A CRIMP PLUG (FOR RG-174/U, 188A/U, 316/U)
DRAWING NO.	400-1112B1-02-50
FILE NO.	R:\D\G\DWG\400\1112B1\02\50

1 2 3 4 5 6 7 8

F
E
D
C
B
A

F
E
D
C
B
A