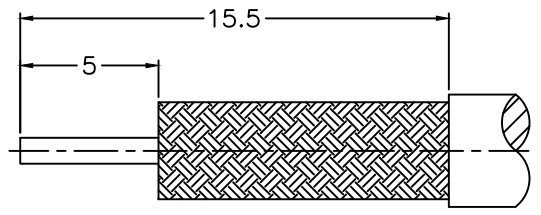
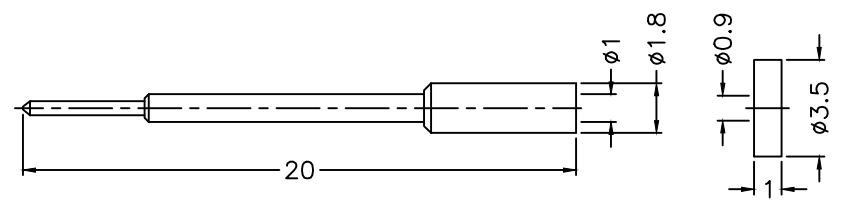
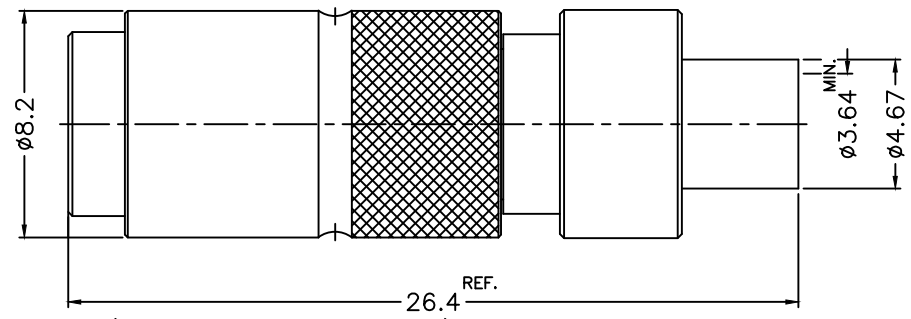


1 2 3 4 5 6 7 8

REVISIONS		
ISS	ZONE	DESCRIPTION\PER REQUEST\DATE
B	D-8	ADDED NO.10\RD-DM060320001\03-20-'17



RECOMMENDED
CABLE STRIPPING DIM'S
(建議剝線尺寸)



- NOTES: FINISH (PLATING THICKNESS IN MICRO-INCHES)
1. BRASS
 2. ALBALOY PLATING (COPPER-TIN-ZINC) PL. 80 MIN. THICK
 3. BERYLLIUM COPPER
 4. SILVER PL. 200 MIN. THICK OVER COPPER PL. 50 MIN. THICK
 5. TEFLON

10	INSULATOR	NOTE 5	NATURAL	1	5824-6481A1-5T-0.9
9	CONTACT PIN	NOTE 1	NOTE 4	1	300-1181A1-9-1.0
8	BARREL	NOTE 1	NOTE 2	1	300-1181A1-8-29
7	RING	NOTE 1	NOTE 2	1	300-1111A1-7
6	OUTER BODY	NOTE 1	NOTE 2	1	300-1111A1-6
5	SPRING	STAINLESS STEEL	NATURAL	2	300-1111A1-5
4	BALL	STAINLESS STEEL	NATURAL	3	300-1111A1-4
3	OUT CONTACT	NOTE 3	NOTE 2	1	300-1111A1-3
2	INSULATOR	NOTE 5	NATURAL	1	300-1111A1-2-50T
1	BODY	NOTE 1	NOTE 2	1	300-1111A1-1
NO.	DESCRIPTION	MATERIAL	FINISH	Q'TY	DRAWING NO.

DIMENSIONS ARE IN MILLIMETERS
UNLESS OTHERWISE SPECIFIED TOLERANCES
0.5-6 = ±0.2
6-30 = ±0.4
30-120 = ±0.6
120-315 = ±1
315-1000 = ±1.6
1000-2000 = ±2.4

PART NO.	
APPROVED	DATE 03-20-'17
CHECKED	DATE 03-20-'17
DRAWN	DATE 03-20-'17

RoHS COMPLIANT

G.L.I.

TITLE	1.0/2.3 PUSH-PULL DIRECTOR SOLDER PLUG (FOR .141, RG-402/U, TFT-402LF)
DRAWING NO.	300-1181A2-29-50
FILE NO.	R:\D\G\DWG\300\1181A2\29\50

1 2 3 4 5 6 7 8

F
E
D
C
B
A

F
E
D
C
B
A