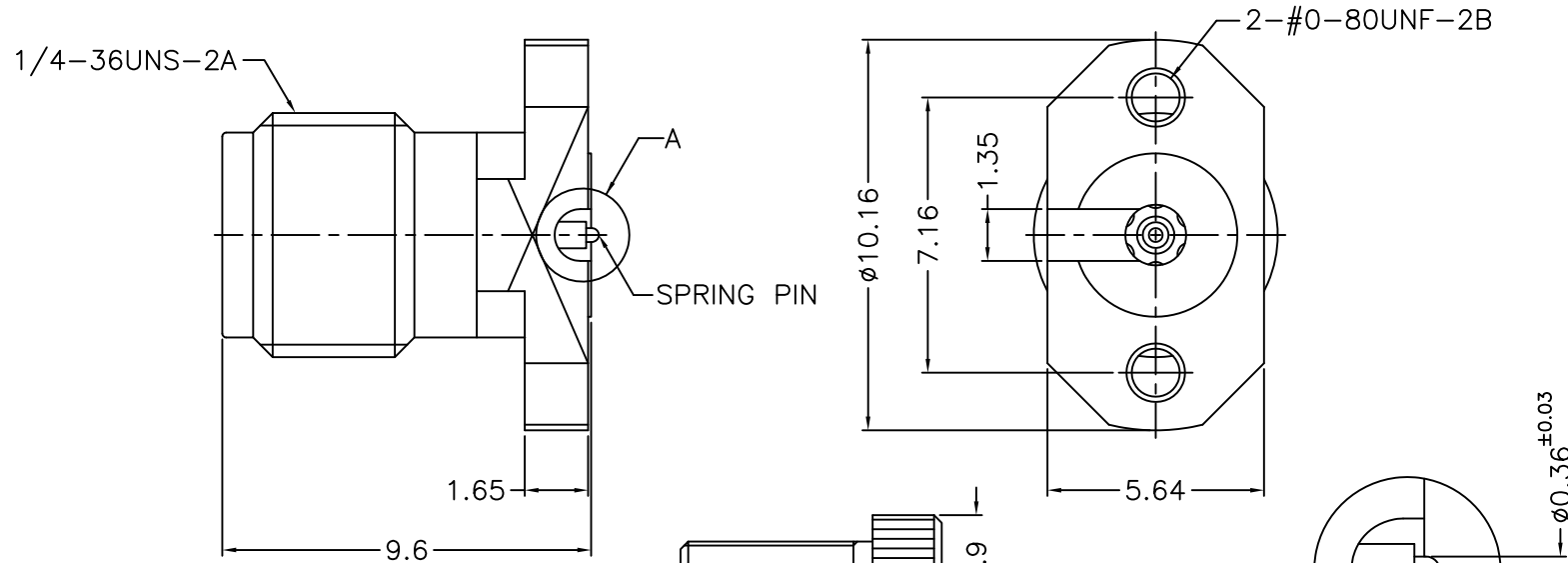


1		2		3		4		5		6		7		8	
REVISIONS															
ISS	ZONE	DESCRIPTION\PER REQUEST\DATE													



NOTES: FINISH (PLATING THICKNESS IN MICRO-INCHES)

1. STAINLESS STEEL
2. PASSIVATED
3. BERYLLIUM COPPER
4. THIN GOLD OVER NICKEL PL. 50 MIN. THICK OVER COPPER PL. 50 MIN. THICK
5. GOLD PL. 10 MIN. THICK OVER NICKEL PL. 50 MIN. THICK OVER COPPER PL. 50 MIN. THICK
6. ULTEM 1000

RoHS COMPLIANT

A DETAIL (10/1)  
(A 詳圖)

8	BOLT	NOTE 1	NOTE 2			DIMENSIONS ARE IN MILLIMETERS				PART NO.		<b>G.L.I.</b>						
7	BODY	NOTE 1	NOTE 2			UNLESS OTHERWISE SPECIFIED TOLERANCES 0.5-6 = ±0.2 6-30 = ±0.4 30-120 = ±0.6 120-315 = ±1 315-1000 = ±1.6 1000-2000 = ±2.4				APPROVED	DATE					TITLE 2.92mm PANEL RECEPT. JACK, SPRING PIN		
6	RING	NOTE 1	NOTE 2							CHECKED	DATE	DRAWING NO. 292-6551F7-50						
5	CONTACT PIN	NOTE 3	NOTE 5							DRAWN		ALAN	DATE	FILE NO. R:\D\DWG\292\6551F7\50				
4	INSULATOR	NOTE 6	NATURAL							SCALE		5/1	ISSUE	1				
3	SPRING	SWP80	NOTE 4															
2	CONTACT PIN	NOTE 3	NOTE 5															
1	CONTACT PIN	NOTE 3	NOTE 5															
NO.	DESCRIPTION	MATERIAL	FINISH	Q'TY	DRAWING NO.	SCALE	5/1	ISSUE	1									

1		2		3		4		5		6		7		8	
---	--	---	--	---	--	---	--	---	--	---	--	---	--	---	--