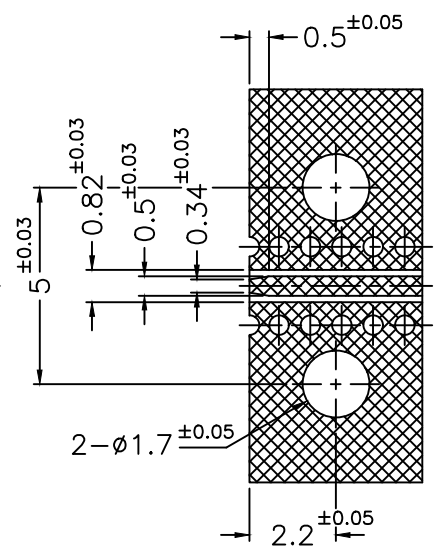
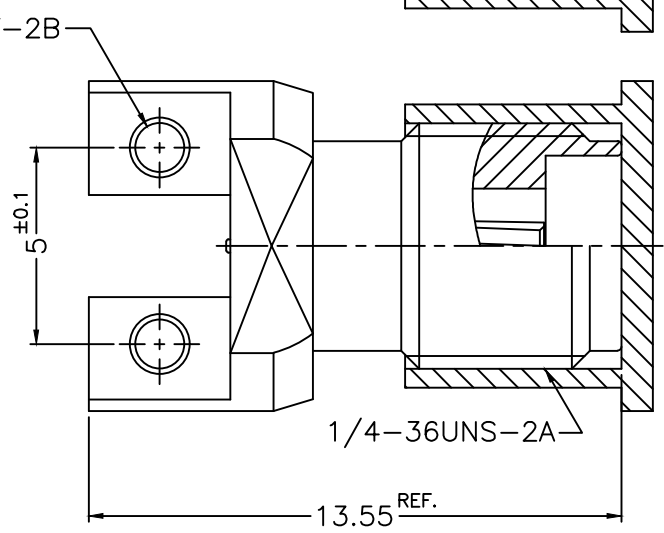
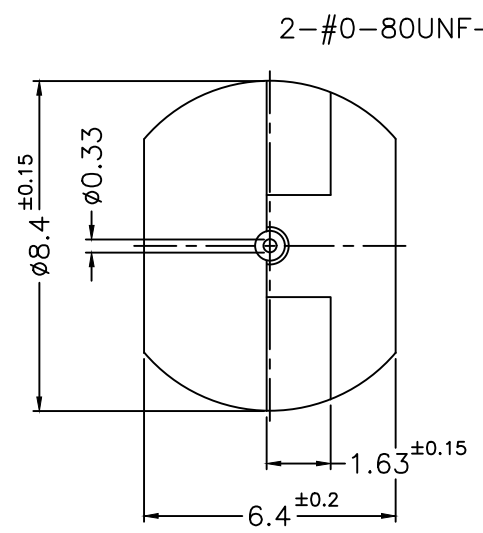
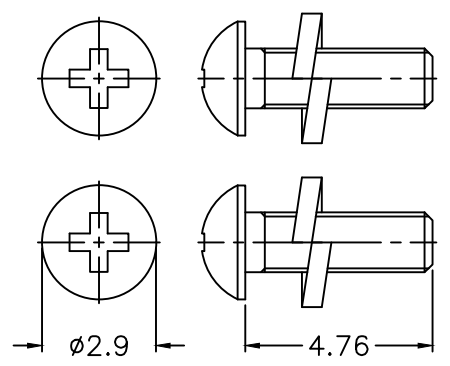
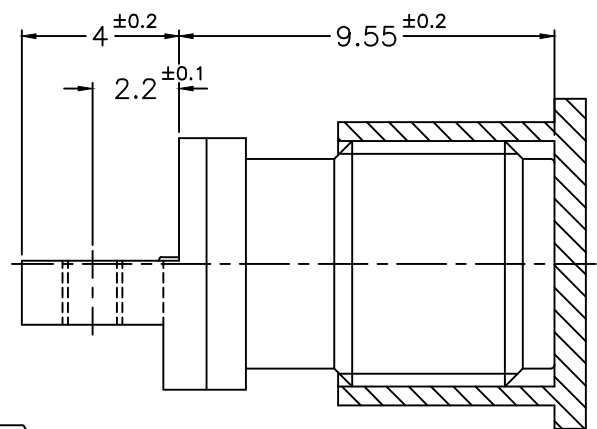


REVISIONS		
ISS	ZONE	DESCRIPTION\PER REQUEST\DATE

REMARK: RECOMMENDED BOLT TIGHTENING TORQUE IS 0.09 N.m (12 in-oz)
 (建議螺栓鎖緊扭力0.09 N.m)



- NOTES: FINISH (PLATING THICKNESS IN MICRO-INCHES)
- BRASS
 - NICKEL PL. 100 MIN. THICK OVER COPPER PL. 50 MIN. THICK
 - BERYLLIUM COPPER
 - GOLD PL. 10 MIN. THICK OVER ELECTROLESS NICKEL PL. 100 MIN. THICK
 - STAINLESS STEEL
 - PASSIVATED
 - ULTEM 1000

RoHS COMPLIANT

7	CAP	LDPE	NATURAL			DIMENSIONS ARE IN MILLIMETERS				PART NO.		G.L.I.		
6	WASHER	NOTE 5	NOTE 6			UNLESS OTHERWISE SPECIFIED TOLERANCES				APPROVED				DATE
5	BOLT	NOTE 5	NOTE 6			0.5-6 = ±0.2	6-30 = ±0.4	30-120 = ±0.6	120-315 = ±1	315-1000 = ±1.6	1000-2000 = ±2.4	DATE	10-21-'22	TITLE
4	BODY	NOTE 1	NOTE 2									DATE	10-21-'22	2.92mm END LAUNCH JACK
3	RING	NOTE 5	NOTE 6									DATE	10-21-'22	DRAWING NO.
2	INSULATOR	NOTE 7	NATURAL									DATE	10-21-'22	292-6251S4-50
1	CONTACT PIN	NOTE 3	NOTE 4									DATE	10-21-'22	FILE NO. R:\D\DWG\292\6251S4\50-A
NO.	DESCRIPTION	MATERIAL	FINISH	Q'TY	DRAWING NO.	SCALE	5/1	ISSUE	A					