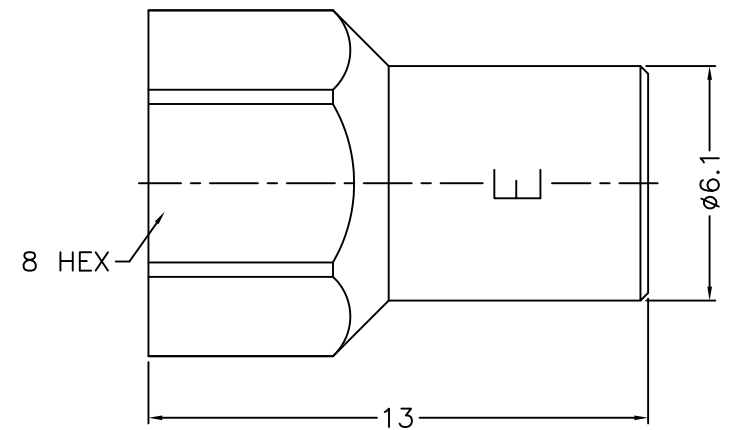
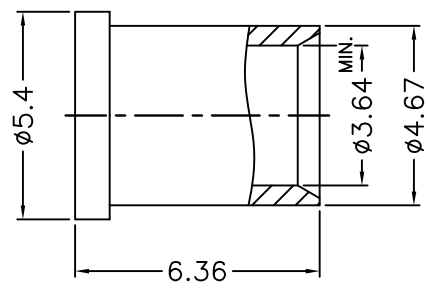
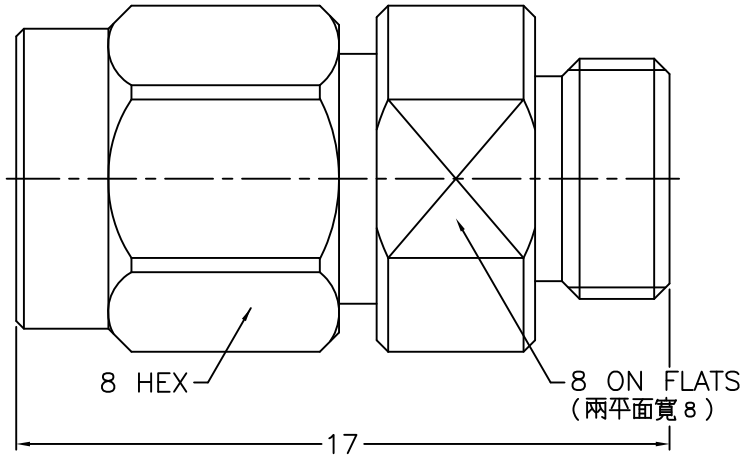


		REVISIONS	
ISS	ZONE	DESCRIPTION\PER REQUEST\DATE	



NOTES: FINISH (PLATING THICKNESS IN MICRO-INCHES)

1. BRASS
2. BERYLLIUM COPPER
3. GOLD PL. 3 MIN. THICK OVER NICKEL PL. 50 MIN. THICK OVER COPPER PL. 50 MIN. THICK
4. GOLD PL. 10 MIN. THICK OVER NICKEL PL. 50 MIN. THICK OVER COPPER PL. 50 MIN. THICK
5. STAINLESS STEEL
6. PASSIVATED
7. ULTEM 1000
8. PTFE

RoHS COMPLIANT

9	NUT	NOTE 5	NOTE 6																
8	BRAID HOLDER	NOTE 1	NOTE 3																
7	INSULATOR	NOTE 8	NATURAL																
6	SHELL	NOTE 5	NOTE 6																
5	RETAINER RING	SUS 304	NOTE 6																
4	RING	NOTE 5	NOTE 6																
3	INSULATOR	NOTE 7	NATURAL																
2	CONTACT PIN	NOTE 2	NOTE 4																
1	BODY	NOTE 5	NOTE 6																
NO.	DESCRIPTION	MATERIAL	FINISH	Q'TY	DRAWING NO.	SCALE	5/1	ISSUE	1	PART NO.			G.L.I.						
DIMENSIONS ARE IN MILLIMETERS										APPROVED									DATE 04-15-'20
UNLESS OTHERWISE SPECIFIED TOLERANCES										CHECKED			DATE 04-15-'20						
0.5-6 = ±0.2										DRAWN			DATE 04-15-'20						
6-30 = ±0.4										ALAN			TITLE 2.92mm DIRECT SOLDER PLUG (FOR .141, RG-402/U CABLE)						
30-120 = ±0.6													DRAWING NO. 292-1181S2-29-50						
120-315 = ±1													FILE NO. R:\D\DWG\292\1181S2\29\50						
315-1000 = ±1.6																			
1000-2000 = ±2.4																			

1	2	3	4	5	6	7	8
---	---	---	---	---	---	---	---