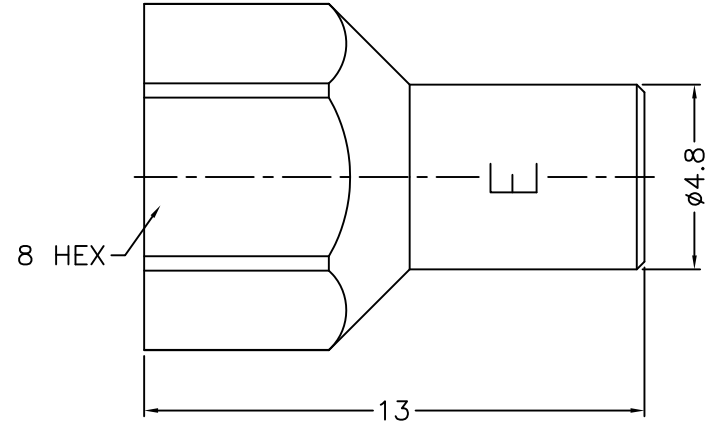
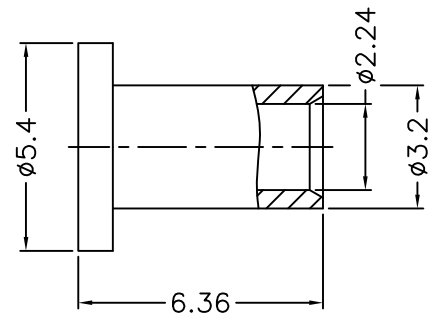
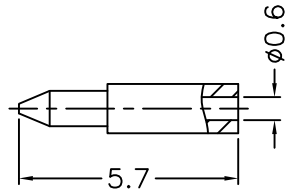
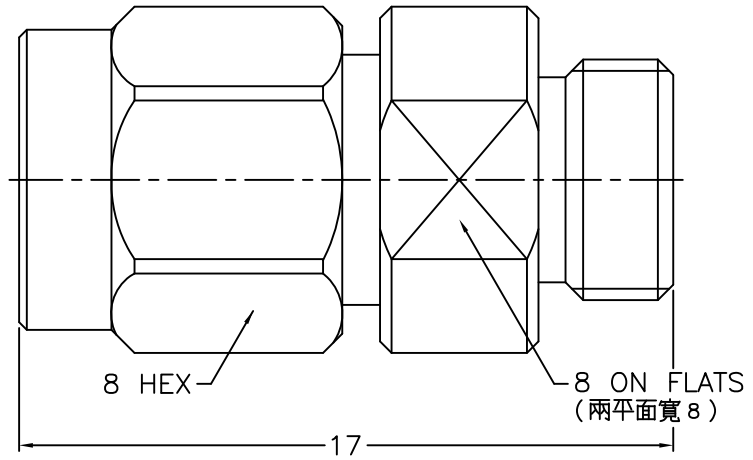


1 2 3 4 5 6 7 8

REVISIONS		
ISS	ZONE	DESCRIPTION\PER REQUEST\DATE



NOTES: FINISH (PLATING THICKNESS IN MICRO-INCHES)

- 1. BRASS
- 2. BERYLLIUM COPPER
- 3. GOLD PL. 3 MIN. THICK OVER NICKEL PL. 50 MIN. THICK OVER COPPER PL. 50 MIN. THICK
- 4. GOLD PL. 10 MIN. THICK OVER NICKEL PL. 50 MIN. THICK OVER COPPER PL. 50 MIN. THICK
- 5. STAINLESS STEEL
- 6. PASSIVATED
- 7. ULTEM 1000
- 8. PTFE

RoHS COMPLIANT

10	NUT	NOTE 5	NOTE 6		
9	BRAID HOLDER	NOTE 1	NOTE 3		
8	INSULATOR	NOTE 8	NATURAL		
7	CONTACT PIN	NOTE 1	NOTE 3		
6	SHELL	NOTE 5	NOTE 6		
5	RETAINER RING	SUS 304	NOTE 6		
4	RING	NOTE 5	NOTE 6		
3	INSULATOR	NOTE 7	NATURAL		
2	CONTACT PIN	NOTE 2	NOTE 4		
1	BODY	NOTE 5	NOTE 6		
NO.	DESCRIPTION	MATERIAL	FINISH	Q'TY	DRAWING NO.

DIMENSIONS ARE IN MILLIMETERS			
UNLESS OTHERWISE SPECIFIED TOLERANCES			
0.5-6	=	±	0.2
6-30	=	±	0.4
30-120	=	±	0.6
120-315	=	±	1
315-1000	=	±	1.6
1000-2000	=	±	2.4
SCALE	5/1	ISSUE	1

PART NO.	
APPROVED	DATE 04-15-'20
CHECKED	DATE 04-15-'20
DRAWN ALAN	DATE 04-15-'20

G.L.I.	
TITLE 2.92mm DIRECT SOLDER PLUG (FOR .085, .086, RG-405/U CABLE)	
DRAWING NO. 292-1181S2-28-50	
FILE NO. R:\D\DWG\292\1181S2\28\50	

1 2 3 4 5 6 7 8

F

F

E

E

D

D

C

C

B

B

A

A