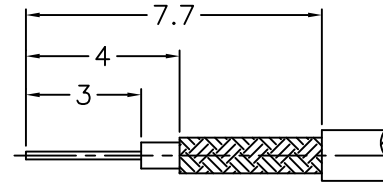
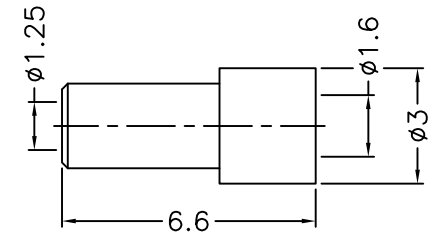
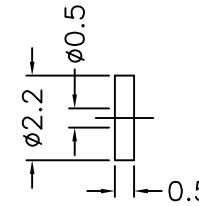
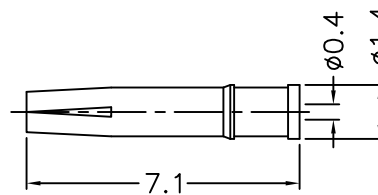
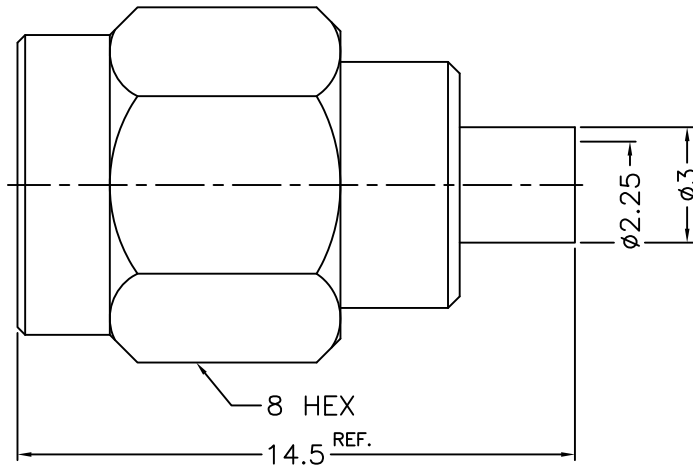


1		2		3		4		5		6		7		8	
REVISIONS															
ISS	ZONE	DESCRIPTION\PER REQUEST\DATE													



RECOMMENDED
CABLE STRIPPING DIM'S
(建議剝線尺寸)



NOTES: FINISH (PLATING THICKNESS IN MICRO-INCHES)

1. BRASS
2. THIN GOLD OVER NICKEL PL. 50 MIN. THICK OVER COPPER PL. 50 MIN. THICK
3. BERYLLIUM COPPER
4. GOLD PL. 3 MIN. THICK OVER NICKEL PL. 50 MIN. THICK OVER COPPER PL. 50 MIN. THICK
5. TEFLON

1. CRIMPED FERRULE
HEX CRIMP SIZE .1"
2. CONTACT PIN TO SOLDER

RoHS COMPLIANT

8	FERRULE	NOTE 1	NOTE 2	1	FR-16-30-66
7	INSULATOR	NOTE 5	NATURAL	1	200-1181A1-6T
6	CONTACT PIN	NOTE 3	NOTE 4	1	1436RP-1111U3-6-0.4
5	GASKET	SILICONE	RED	1	GS-43-60-06
4	RETAINER RING	SUS 303	NATURAL	1	1436-1000-4
3	INSULATOR	NOTE 5	NATURAL	1	1436-1111U3-3-50T
2	BODY	NOTE 1	NOTE 2	1	1436-1111U3-2-30
1	SHELL	NOTE 1	NOTE 2	1	1436-1000-1
NO.	DESCRIPTION	MATERIAL	FINISH	Q'TY	DRAWING NO.

DIMENSIONS ARE IN MILLIMETERS
UNLESS OTHERWISE SPECIFIED TOLERANCES
0.5-6 = ±0.2
6-30 = ±0.4
30-120 = ±0.6
120-315 = ±1
315-1000 = ±1.6
1000-2000 = ±2.4

PART NO.		DATE	
APPROVED		01-28-'15	
CHECKED		01-28-'15	
DRAWN	ANGELA	DATE	01-28-'15

G.L.I.	
TITLE SMA REVERSE POLARITY CRIMP PLUG (FOR 1.37 O.D MICRO-CABLE)	
DRAWING NO. 1436RP-1111U3-32-50	
FILE NO. R:\D\G\DWG\1436\RP\1111U3\32\50	

1		2		3		4		5		6		7		8	
---	--	---	--	---	--	---	--	---	--	---	--	---	--	---	--