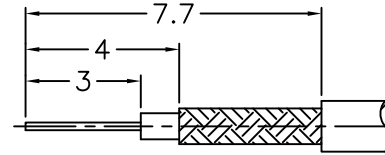
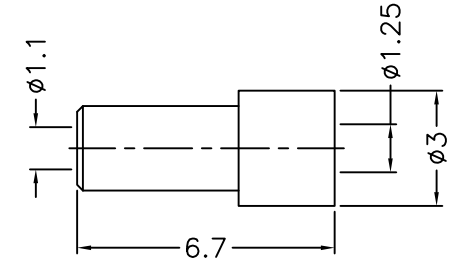
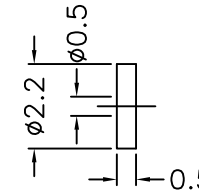
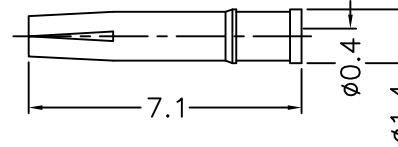
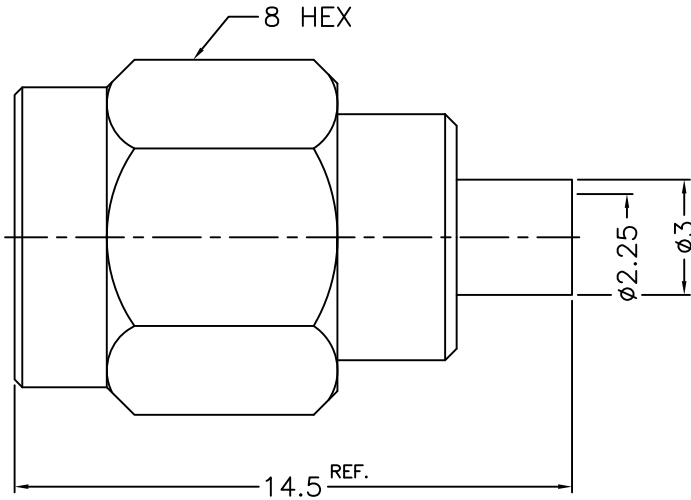


1		2		3		4		5		6		7		8	
REVISIONS															
ISS	ZONE	DESCRIPTION\PER REQUEST\DATE													



RECOMMENDED
CABLE STRIPPING DIM'S
(建議剝線尺寸)



NOTES: FINISH (PLATING THICKNESS IN MICRO-INCHES)

1. BRASS
2. THIN GOLD OVER NICKEL PL. 50 MIN. THICK
OVER COPPER PL. 50 MIN. THICK
3. GOLD PL. 3 MIN. THICK OVER NICKEL PL. 50 MIN. THICK
OVER COPPER PL. 50 MIN. THICK
4. TEFLON
5. BERYLLIUM COPPER

1. CRIMPED FERRULE
HEX CRIMP SIZE .1"
2. CONTACT PIN TO SOLDER

8	FERRULE	NOTE 1	NOTE 2	1	FR-125-30-67
7	INSULATOR	NOTE 4	NATURAL	1	200-1181A1-6T
6	CONTACT PIN	NOTE 5	NOTE 3	1	1436RP-1111U3-6-0.4
5	GASKET	SILICONE	RED	1	GS-43-60-06
4	RETAINER RING	SUS 303	NATURAL	1	1436-1000-4
3	INSULATOR	NOTE 4	NATURAL	1	1436-1111U3-3-50T
2	BODY	NOTE 1	NOTE 2	1	1436-1111U3-2-30
1	SHELL	NOTE 1	NOTE 2	1	1436-1000-1
NO.	DESCRIPTION	MATERIAL	FINISH	Q'TY	DRAWING NO.

DIMENSIONS ARE IN MILLIMETERS			
UNLESS OTHERWISE SPECIFIED TOLERANCES			
0.5-6	=	±0.2	
6-30	=	±0.4	
30-120	=	±0.6	
120-315	=	±1	
315-1000	=	±1.6	
1000-2000	=	±2.4	
SCALE	5/1	ISSUE	A

PART NO.	
APPROVED	DATE 05-16-'13
CHECKED	DATE 05-16-'13
DRAWN GOLDEN	DATE 05-16-'13

G.L.I.	
TITLE SMA REVERSE POLARITY CRIMP PLUG (FOR 1.13 O.D MICRO CABLE)	
DRAWING NO. 1436RP-1111U3-30-50	
FILE NO. R:\D\G\DWG\1436\RP\1111U3\30\50	

1		2		3		4		5		6		7		8	
---	--	---	--	---	--	---	--	---	--	---	--	---	--	---	--