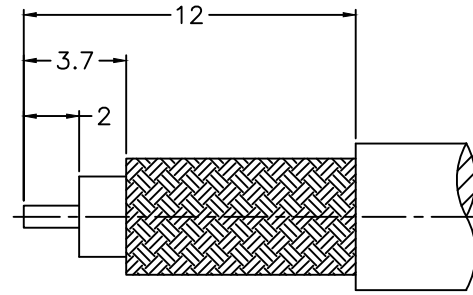
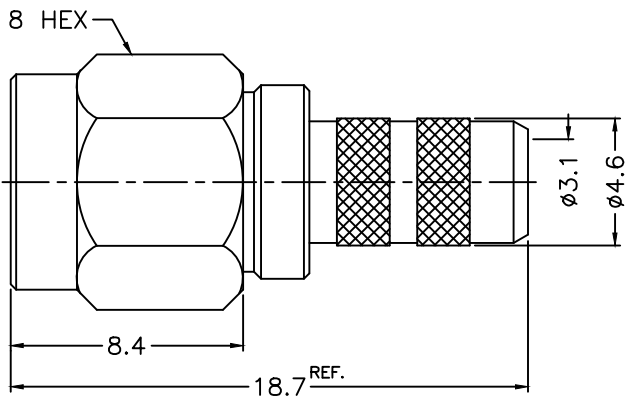


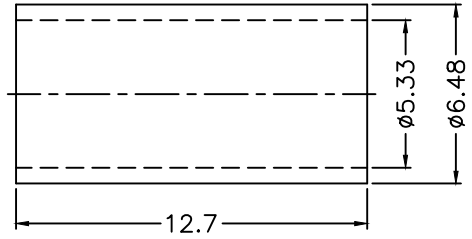
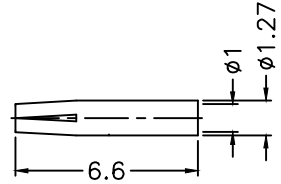
1 2 3 4 5 6 7 8

REVISIONS		
ISS	ZONE	DESCRIPTION\PER REQUEST\DATE

F
E
D
C
B
A



RECOMMENDED
CABLE STRIPPING DIM'S
(建議剝線尺寸)



- NOTES: FINISH (PLATING THICKNESS IN MICRO-INCHES)
1. BRASS
 2. THIN GOLD OVER NICKEL PL. 50 MIN. THICK OVER COPPER PL. 50 MIN. THICK
 3. BERYLLIUM COPPER
 4. GOLD PL. 3 MIN. THICK OVER NICKEL PL. 50 MIN. THICK OVER COPPER PL. 50 MIN. THICK
 5. TEFLON

- REMARK: 1. NO.3 MUST WITHSTAND A 6 lbs. MIN. PUSHOUT FORCE FROM NO.2 AFTER STAKING OPERATION
2. REMARK1 IS MAINTAINED BY STAMPING THE FOUR POINTS SHOWN ON THE DRAWING WITHOUT PUNCTURING NO.2
- (1. 打四點後零件3由零件2推出至少必須承受6磅推力)
(2. 打四點後除需符合備註1要求外且不可擊穿零件2)

1. CRIMPED FERRULE HEX CRIMP SIZE .213"
2. CONTACT PIN TO SOLDER

NO.	DESCRIPTION	MATERIAL	FINISH	Q'TY	DRAWING NO.
7	FERRULE	COPPER	NOTE 2	1	FR-533-648-127C
6	CONTACT PIN	NOTE 3	NOTE 4	1	1436-6581A1-3-1.0
5	GASKET	SILICONE	RED	1	GS-43-60-06
4	RETAINER RING	SUS 303	NATURAL	1	1436-1000-4
3	INSULATOR	NOTE 5	NATURAL	1	1436RP-1111A4-3-50T
2	BODY	NOTE 1	NOTE 2	1	1436RP-1111A4-2-06
1	SHELL	NOTE 1	NOTE 2	1	1436-1000-1

DIMENSIONS ARE IN MILLIMETERS
UNLESS OTHERWISE SPECIFIED
TOLERANCES
0.5-6 = ±0.2
6-30 = ±0.4
30-120 = ±0.6
120-315 = ±1
315-1000 = ±1.6
1000-2000 = ±2.4

PART NO.	
APPROVED	DATE 03-15-'13
CHECKED	DATE 03-15-'13
DRAWN	DATE 03-15-'13

G.L.I.	
TITLE SMA REVERSE POLARITY CRIMP PLUG (FOR RG-58, 58A, 58C, 141)	
DRAWING NO. 1436RP-1111A4-06-50	
FILE NO. R:\D\G\DWG\1436\RP\1111A4\06\50	

F
E
D
C
B
A

1 2 3 4 5 6 7 8