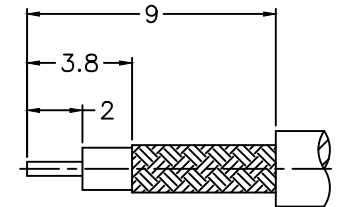
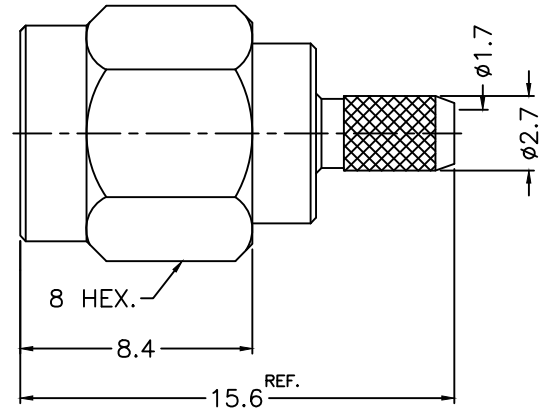
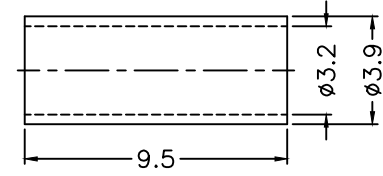
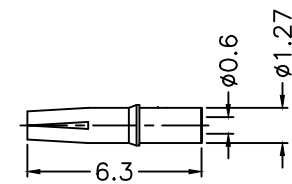


1 2 3 4 5 6 7 8

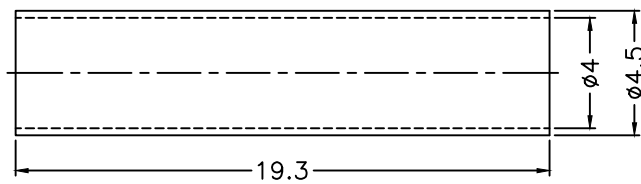
REVISIONS		
ISS	ZONE	DESCRIPTION\PER REQUEST\DATE



RECOMMENDED
CABLE STRIPPING DIM'S
(建議剝線尺寸)



- NOTES: FINISH (PLATING THICKNESS IN MICRO-INCHES)
1. BRASS
 2. THIN GOLD OVER NICKEL PL. 50 MIN. THICK OVER COPPER PL. 50 MIN. THICK
 3. BERYLLIUM COPPER
 4. GOLD PL. 3 MIN. THICK OVER NICKEL PL. 50 MIN. THICK OVER COPPER PL. 50 MIN. THICK
 5. TEFLON



1. CRIMPED FERRULE HEX. CRIMP SIZE .128"
2. CONTACT PIN TO SOLDER

8	HEAT SHRINK TUBING		BLACK	1	HT-40-45-193
7	FERRULE	NOTE 1	NOTE 2	1	FR-32-39-95
6	CONTACT PIN	NOTE 3	NOTE 4	1	1436-6411A2-6-0.6
5	GASKET	SILICONE	RED	1	GS-43-60-06
4	RETAINER RING	SUS 303	NATURAL	1	1436-1000-4
3	INSULATOR	NOTE 5	NATURAL	1	1436RP-1111A3-3-50T
2	BODY	NOTE 1	NOTE 2	1	1436RP-1111A3-2-02
1	SHELL	NOTE 1	NOTE 2	1	1436-1000-1
NO.	DESCRIPTION	MATERIAL	FINISH	Q'TY	DRAWING NO.

DIMENSIONS ARE IN MILLIMETERS			PART NO.	
UNLESS OTHERWISE SPECIFIED TOLERANCES			APPROVED	DATE
0.5-6 = ±0.2				12-16-'10
6-30 = ±0.4			CHECKED	DATE
30-120 = ±0.6				12-16-'10
120-315 = ±1			DRAWN	DATE
315-1000 = ±1.6				12-16-'10
1000-2000 = ±2.4				
SCALE	4/1	ISSUE	A	

G.L.I.	
TITLE	SMA REVERSE POLARITY CRIMP PLUG (FOR RG-174, 188A, 316, LMR100)
DRAWING NO.	1436RP-1111A3-02-50
FILE NO.	R:\D\G\DWG\1436\RP\1111A3\02\50

F
E
D
C
B
A

F
E
D
C
B
A

1 2 3 4 5 6 7 8